



Swedish Agency
for Marine and
Water Management

Advancing Marine Spatial Planning in the Western Indian Ocean

MSP, impact assessment, and WIO Symphony



Tomas Andersson and Wilhelm Gårdmark

21 October 2024



UN 
environment
programme



Swedish Agency
for Marine and
Water Management

Marine spatial planning

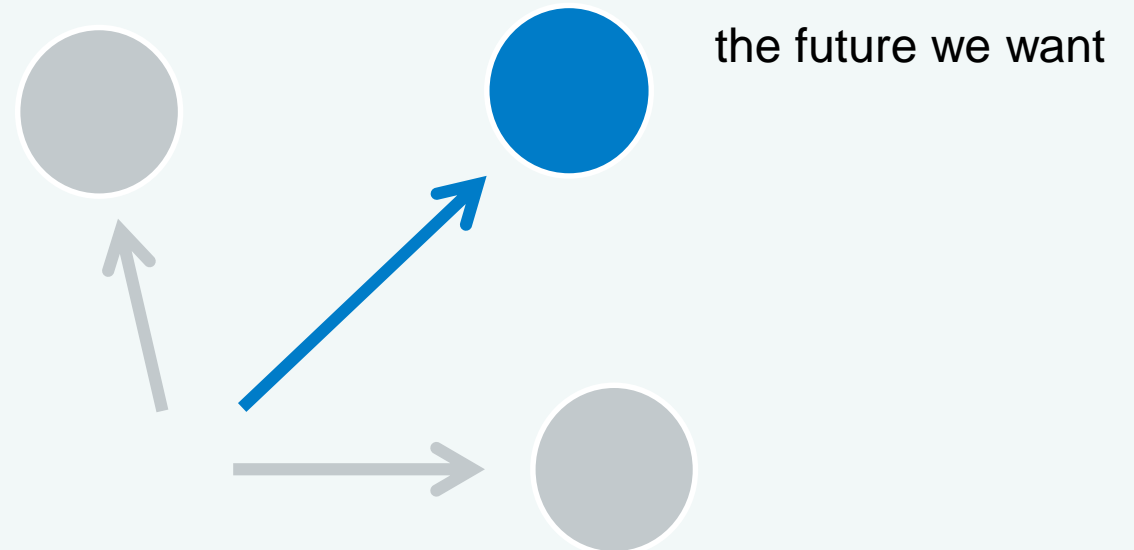


Swedish Agency
for Marine and
Water Management

Marine spatial planning

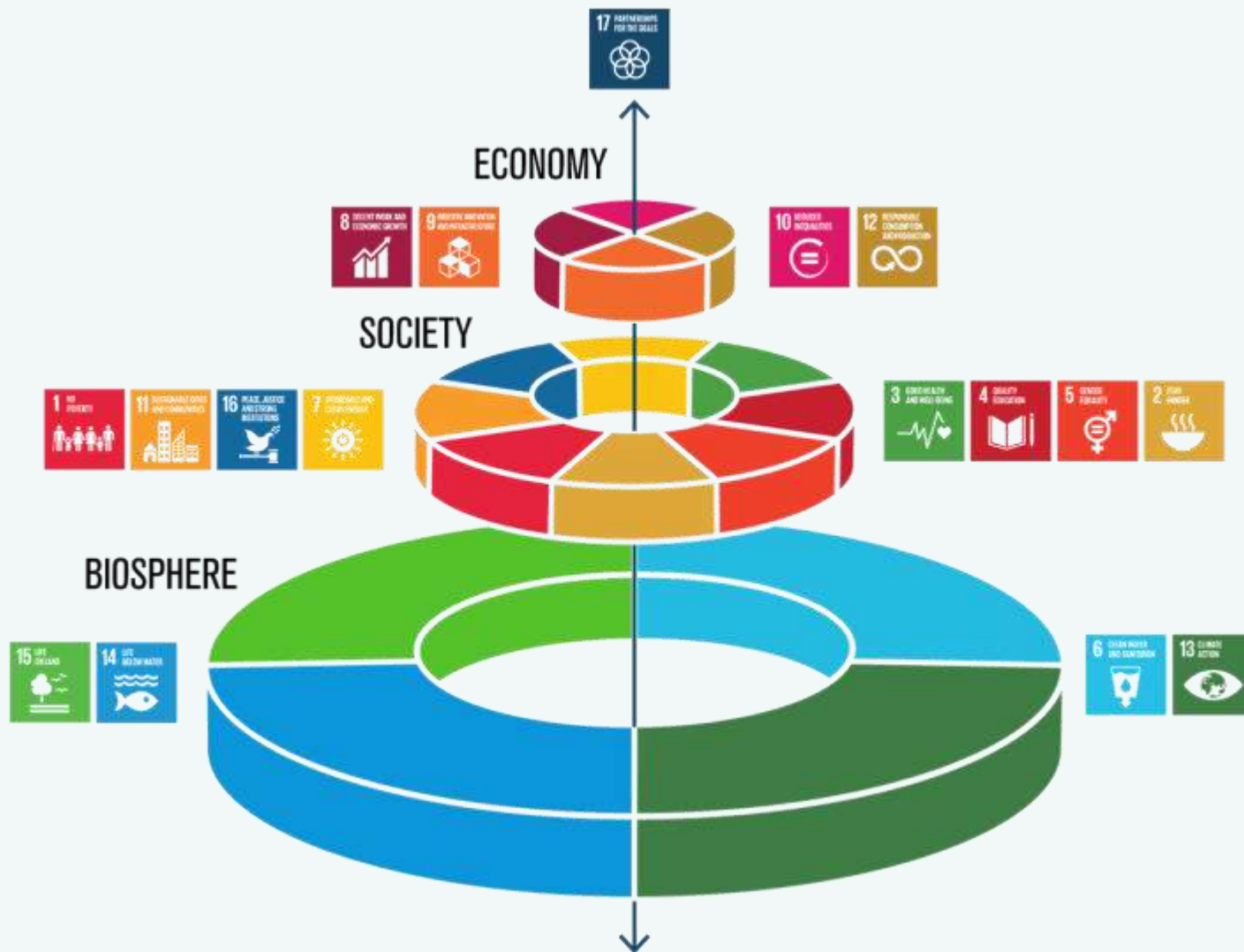
- » public process
- » analysing and allocating
- » spatial and temporal
- » distribution of human activities
- » to achieve ecological, economic and social objectives

usually specified through
a political process





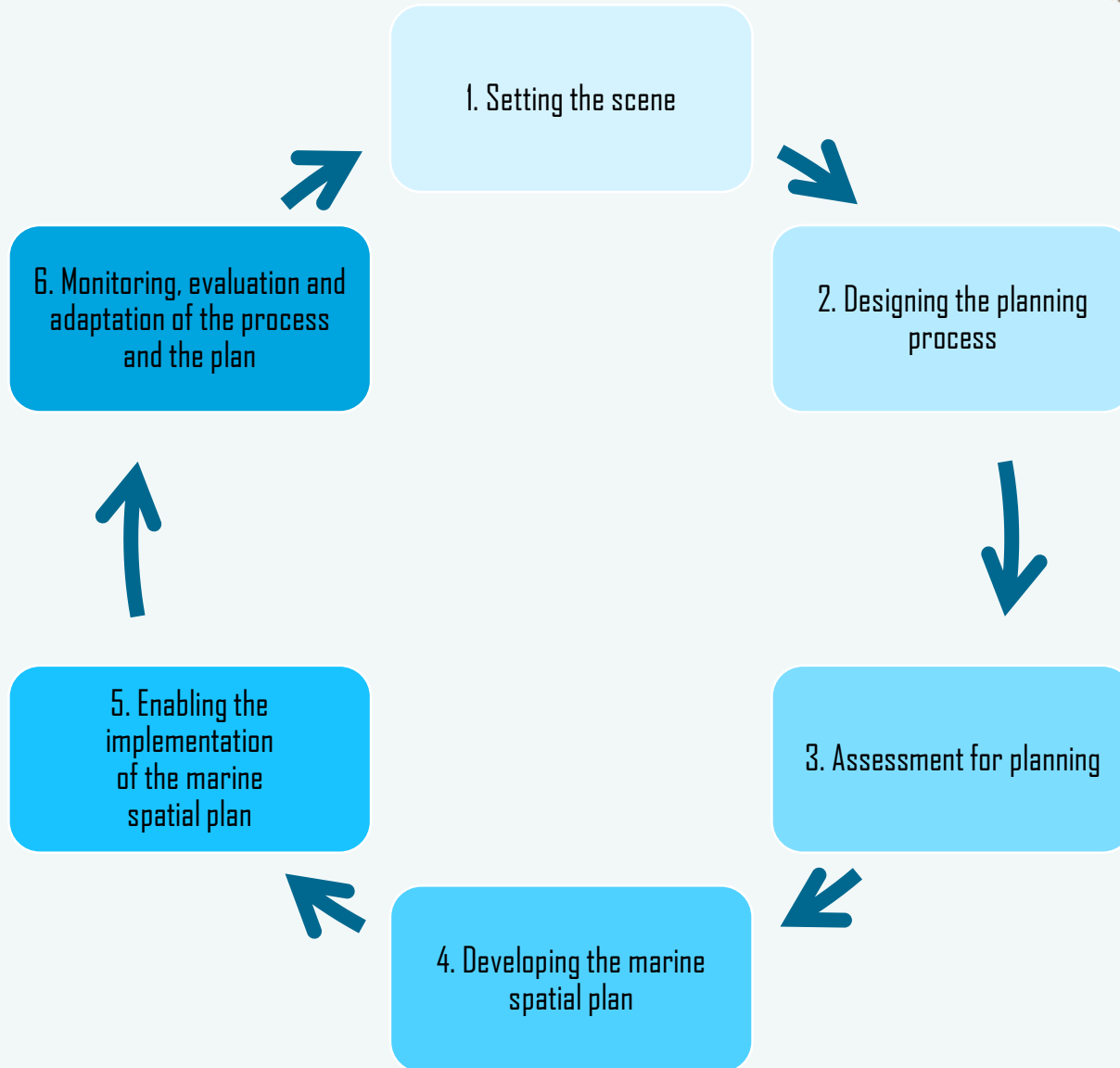
Swedish Agency
for Marine and
Water Management



Graphics by Senka Lukavicki-Razic

Ecosystems are the basis, necessary for development

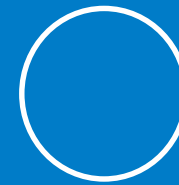
MSP cycle 6 steps



Swedish Agency
for Marine and
Water Management

from the





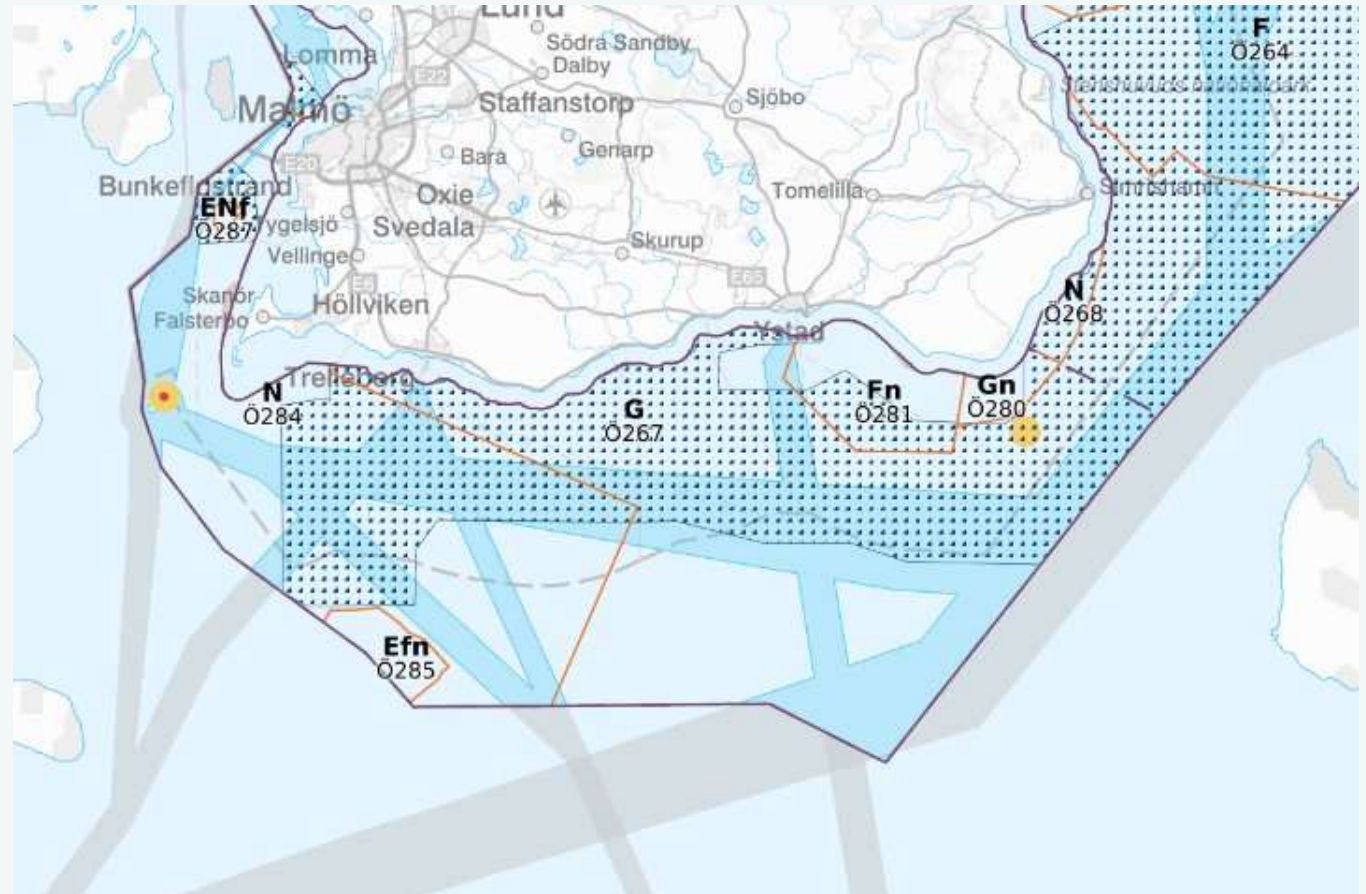
“MSP is 80 percent communication”

Swedish MSP



Swedish Agency
for Marine and
Water Management

**Marine spatial
Plans for
the Gulf of Bothnia,
the Baltic Sea and
the Skagerrak/
Kattegat**





UN 
environment
programme



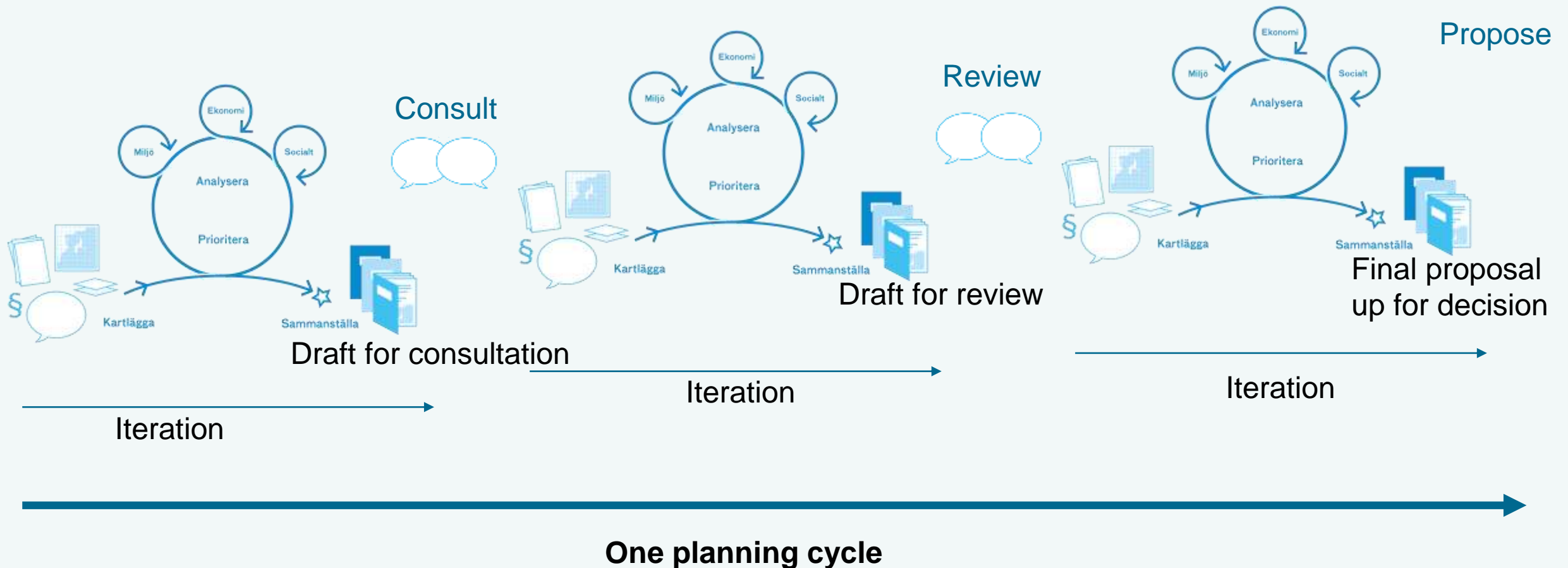
Swedish Agency
for Marine and
Water Management

How you can make use of strategic environmental assessments in your MSP



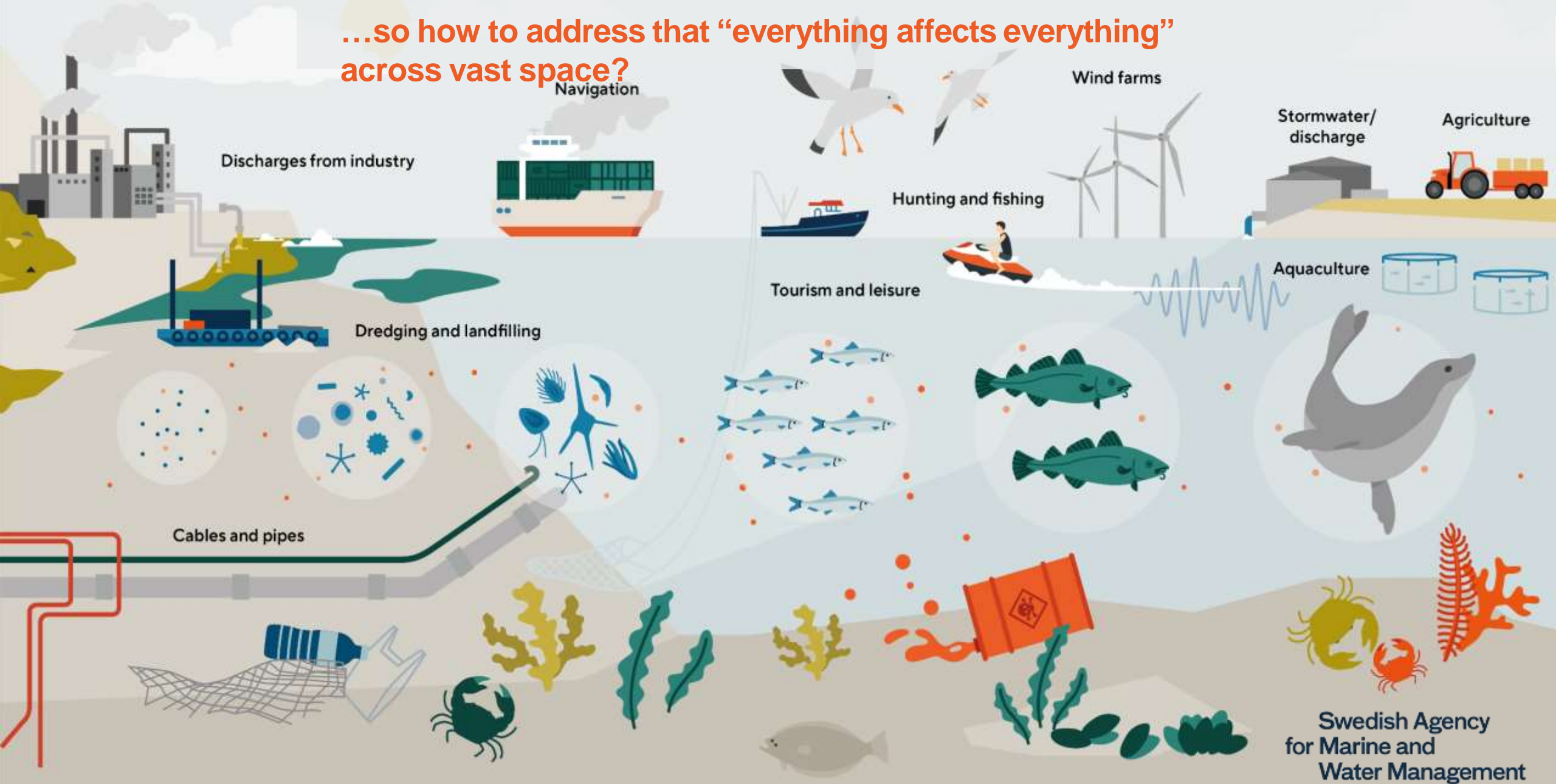
Swedish Agency
for Marine and
Water Management

Repeat for each iteration, consult



Holistic approach necessary for MSP...

...so how to address that “everything affects everything”
across vast space?



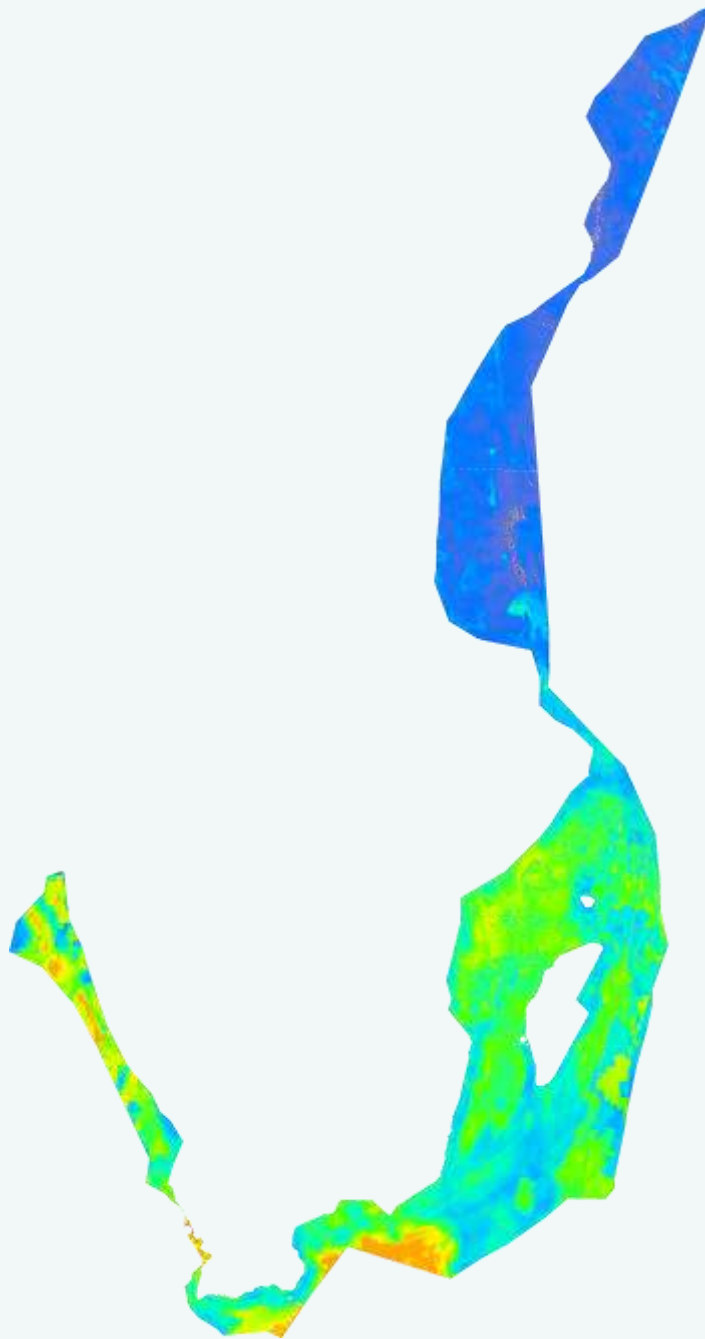


UN 
environment
programme



Swedish Agency
for Marine and
Water Management

Symphony



Use of Symphony Sweden

1. Spatial overview

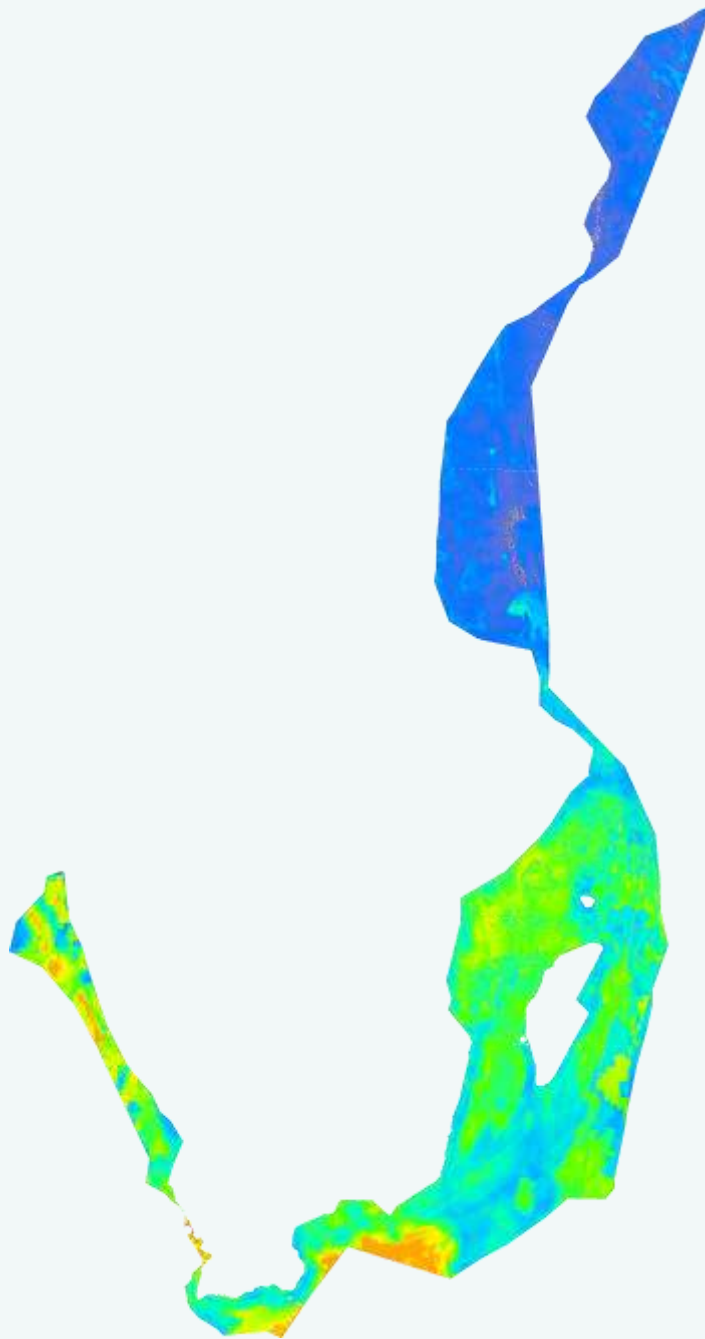
2. Answers planning questions

3. Adjust areas

4. Basis for strategic
environmental
assessment



Swedish Agency
for Marine and
Water Management



Swedish Agency
for Marine and
Water Management

Use of Symphony Sweden

1. Spatial overview

- ecosystem components
- pressures
- impacts

2. Answers planning questions

- " Where is particular consideration of nature values needed?
- " Which sectors have which environmental effects?
- " What happens if we change the use of the sea like this?

3. Adjust areas

- reduce pressure

4. Basis for SEA Strategic Environmental Assessment



UN 
environment
programme



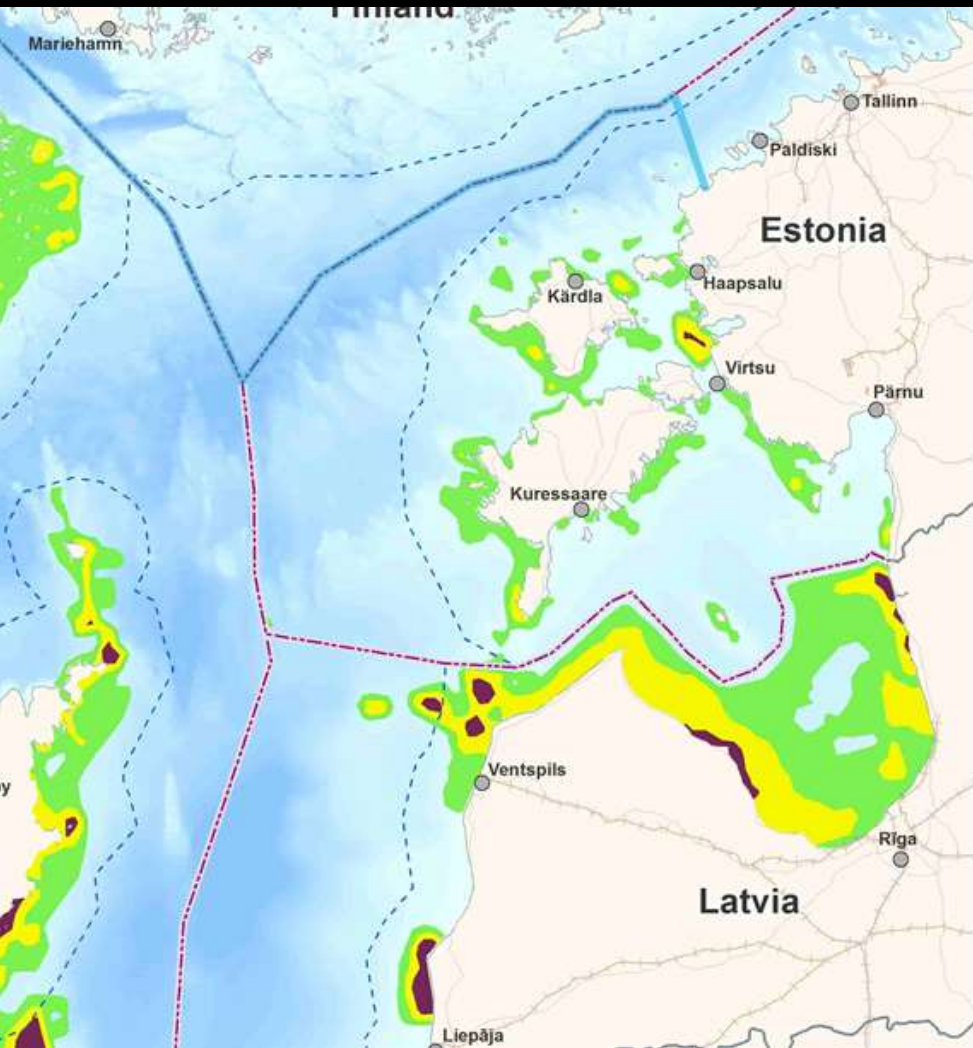
Swedish Agency
for Marine and
Water Management

Think beyond borders

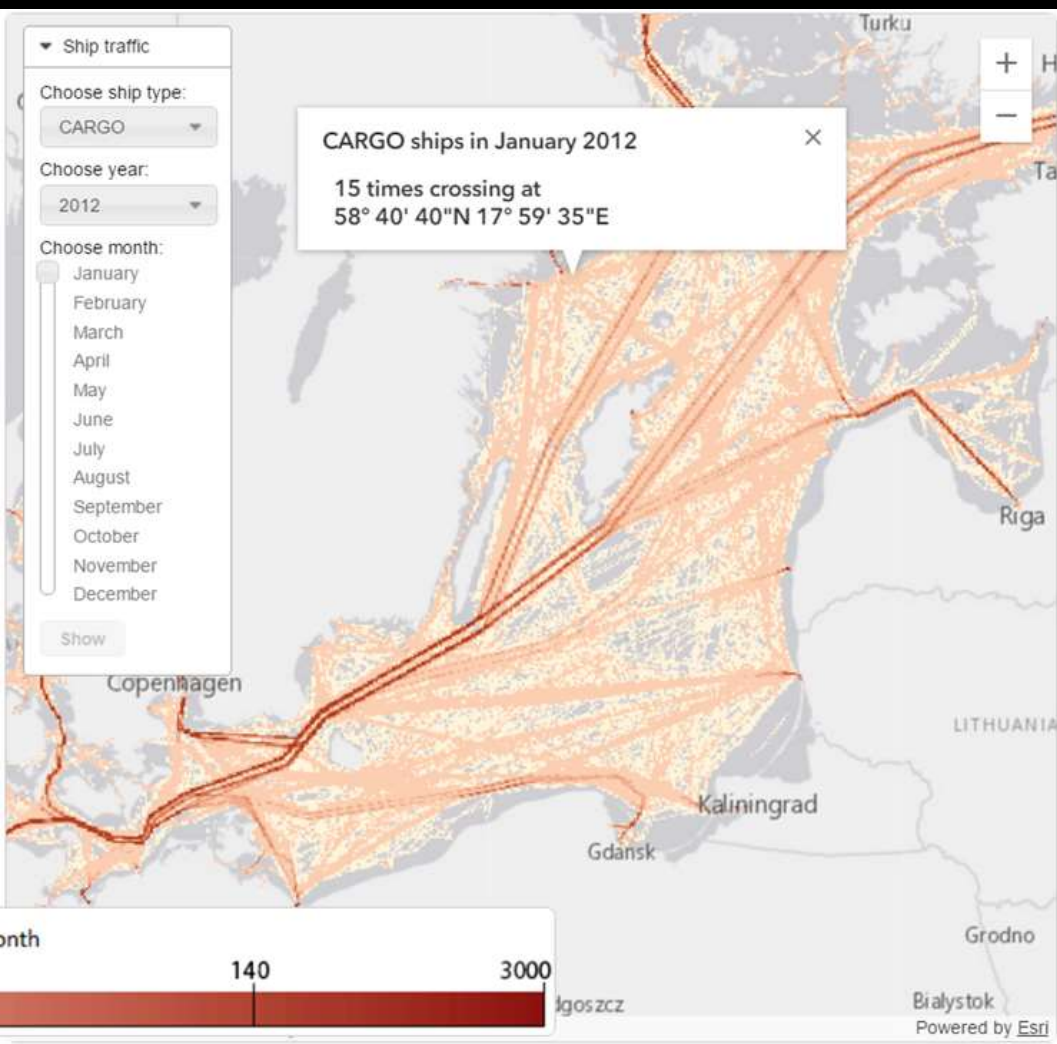
Benefits of thinking whole region

Incomplete picture





One
green infrastructure



One
shipping network

Think beyond borders



Share the same scientific planning evidence

WIO Symphony



Sweden
Sverige

Swedish Agency
for Marine and
Water Management

www.nairobiconvention.org/wio-symphony