



## Benguela Current Convention (BCC)

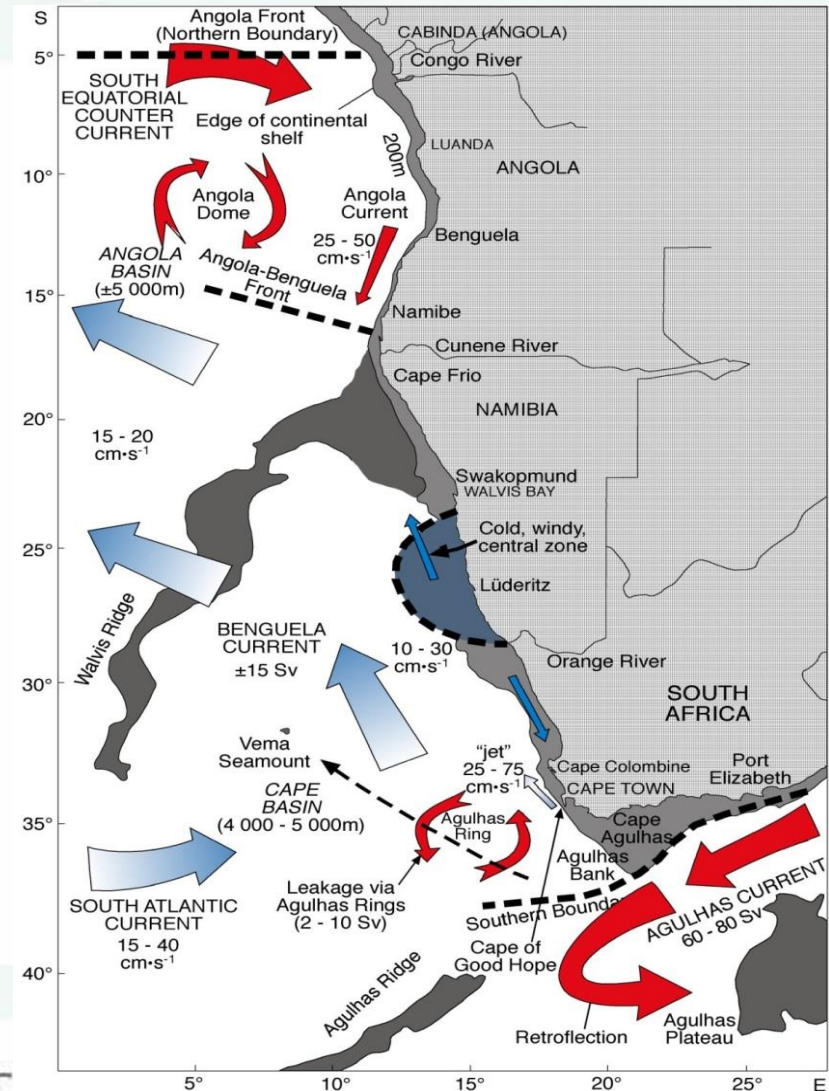
1. INTRODUCTION
2. THE BCLME REGION
3. EVOLUTION OF THE BCC
4. MARINE SECTORS
5. GOVERNANCE OF THE BCC
6. WHY COMPLIANCE COMMITTEE
7. SOUTH-SOUTH COLLABORATION
8. WHAT WE DO
- STRATEGIC ACTION PROGRAMME
9. OTHE BCC ACTIVITIES

- About **64** Large Marine Ecosystems (LME) classified around the margins of Atlantic, Pacific and Indian Oceans (GEF);
- Pan-African LMEs - Agalhus, **Benguela**, Guinea, Canary and Somali,
- The BCLME is one of the most productive marine ecosystem and a strategic asset in the region and globally,
- It supports multiple economic activities that have a direct bearing on the livelihoods of its people,
- We recognise that the BCLME is constantly and increasingly at risk (e.g. environmental issues, climate change, overfishing, pollution etc.),
- The BCC provides a combined and coordinated response in addressing these challenges, this is shown through the investments made by member countries and development partners thus far,
- Given the global significance of the LMEs, efforts need to be extended beyond the region, hence there is a need for broader participation and cooperation,
- We recognise with appreciation the support from development partners in enhancing Ocean governance and Sustainable development in the region.

# The BCLME Region

Three countries sharing a productive ecosystem

- Spans the Exclusive Economic Zones (EEZs) of Angola, Namibia and South Africa;
- Incorporates the sea, seabed and land-sea interface up to the high water mark;
- Endowed with variety of biodiversity including fish, mammals, seabirds; etc.
- Rich in non-living resources such as oil, gas, diamond, phosphate; ...
- One of the 4 major productive current systems;
- Dominated by upwelling system
- Contribute approximately **US\$269 billion** per year





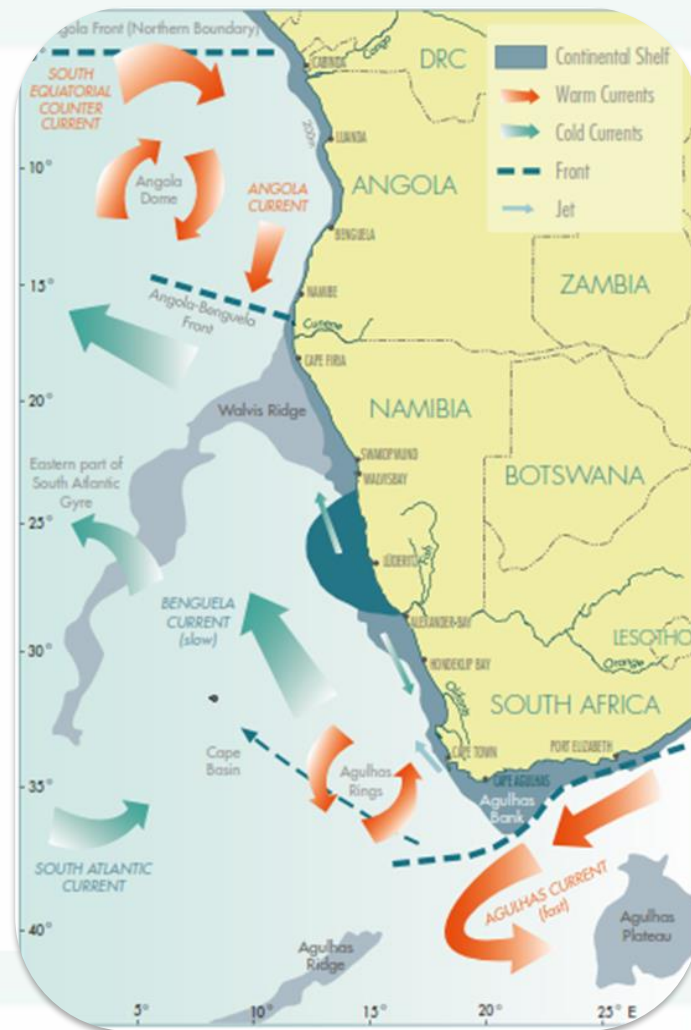
# PAST - PRESENT OF BCLME

*Three countries sharing a productive ecosystem*

- BENEFIT Programme: 1996-2008
  - Scientific co-operation: Norway & Germany
- BCLME Programme: 2002-2008 – GEF
  - Socio-economic analysis and Transboundary Diagnosis Analysis (TDA)
  - GOAL: Integrated management, sustainable use and protection of the BCLME,
- The Strategic Action Programme (SAP: 2000-2014, policy action to address identified problems).
- By 2007 the 3 countries signed an **Interim Agreement**, which established the Benguela Current Commission,
- BCC Secretariat offices opened in Windhoek, 2008, and later (2011) relocated to Swakopmund.

## Benguela Current Convention

- The Benguela Current Convention was signed in March 2013;
- **Ratified** by the 3 member States by July 2014
- Came into Force **10 Dec 2015**
- Registered with UN SG in July 2016
- **New SAP 2015 - 2019** signed August 2014



# Ministries of the BCC



- Ministry of Environment
- Ministry of Fisheries and the Sea
- Ministry of Petroleum
- Ministry of Transport



- Ministry of Environment and Tourism
- Ministry of Fisheries & Marine Resources
- Ministry of Mines and Energy
- Ministry of Works and Transport



- Department of Environmental Affairs
- Department of Agriculture, Forestry and Fisheries
- Department of Mineral Resources
- Department of Transport

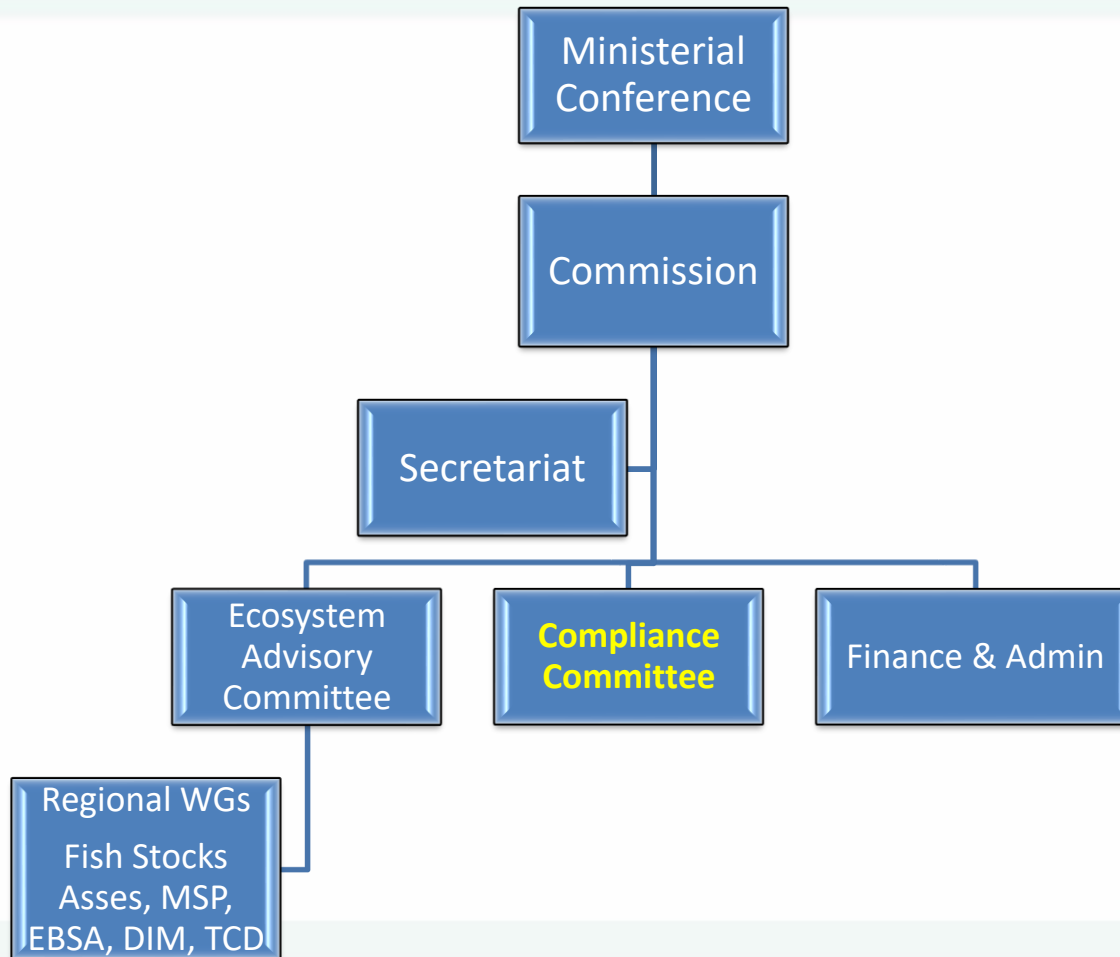


# ECONOMIC SECTORS

Coastal and marine resources contribute approximately **US\$269** billion per year to the economies of Angola, Namibia and South Africa

Sector	Dominant Party(s)	Ecosystem Impact
<b>Petroleum and Gas</b>	Angola	Pollution, Disturbance and physical modification of coastal and marine habitat & Climate Change
<b>Marine Mining</b>	Nam and SA	Pollution, Disturbance and physical modification of coastal and marine habitat & CC
<b>Capture Fisheries</b>	Nam and SA	Unsustainable use of resources, Disturbance and physical modification of habitat & CC
<b>Tourism &amp; Recreation activities</b>	SA	Pollution, Unsustainable use of resources, Disturbance and physical modification of habitat & CC
<b>Marine Transport</b>	SA	Invasive species, Pollution, Disturbance and physical modification of habitat & Climate Change
<b>Mariculture</b>	SA	Invasive species and Pollution
<b>Desalination</b>	Nam and SA	Pollution
<b>Salt Production</b>	All	Pollution and Disturbance and physical modification of coastal and marine habitats

# BCC Structure





## **Ministerial Conference**

*Highest decision making body; policy guidance;*

## **Commission**

*Provide strategic direction; coordinate implementation of the Convention and the SAP;*

## **EAC**

*Provides best available scientific advice and information to the Commission;*

## **FAC**

*Oversight responsibility for finance and responsibility, advice Commission;*

## **Compliance Committee**

*Coordinate compliance activities, ensure decisions taken are complied with, advice Commission;*

## **Secretariat**

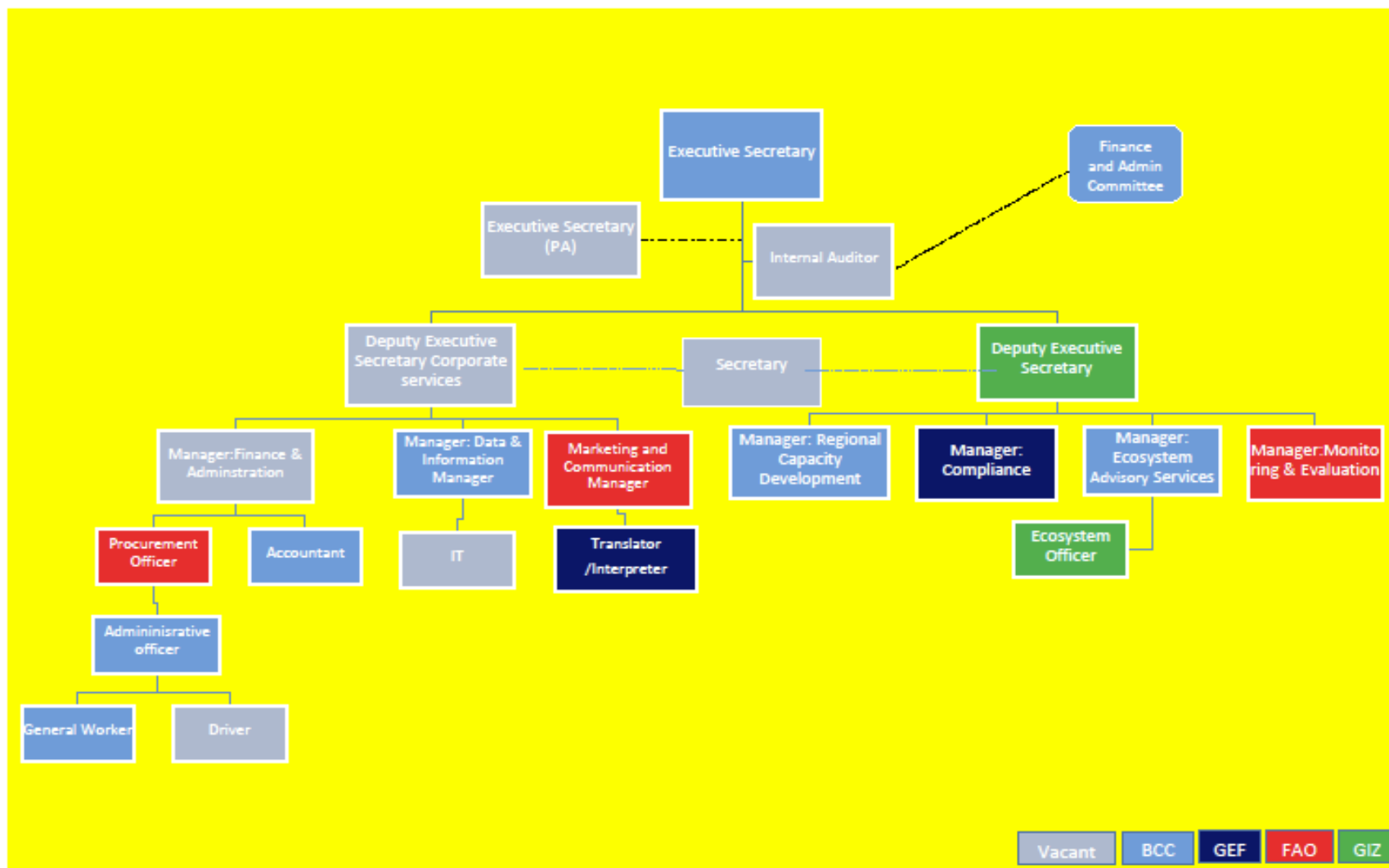
*Coordination and facilitation;*

## **Data Information Management (DIM) WG**

## **Regional Training Advisory (RTA) WG**

# BCC Secretariat Organogram

*Three countries sharing a productive ecosystem*



## BCC OBJECTIVE

- Promote a coordinated regional approach to the long-term conservation, protection, rehabilitation, enhancement and sustainable use of the BCLME
- *World's 1<sup>st</sup> LME Legal Framework*



# Ministerial Conference, Swkp, Namibia, 2016

*Three countries sharing a productive ecosystem*





Established in terms of **Article 9**, to carry out functions as contemplated in **Article 12** of the Convention:

- To provide information, advice and recommendations to the Commission and carry out activities as requested from time to time by the Commission
- Coordinate compliance activities,
- Coordinate with other Committees on matters of common interest

**Article 8**, provide functions for the Commission, to give effect to the Objective of the Convention:

- The Committee shall carry out its functions to support the Commission to realise its objective,

**Article 17**, provide obligations for Parties:

- To take measures to implement the Convention
- Report to the Commission annually on implementation of decisions and recommendations

The Committee shall promote Compliance with obligations of Parties

- Develop management and conservation measures
- Develop reporting templates to give effect to Article 17, etc.





## WHAT WE DO: REGIONAL COLLABORATION



Three countries sharing a productive ecosystem

## THE BENGUELA CURRENT COMMISSION STRATEGIC ACTION PROGRAMME 2015 – 2019

A COORDINATED REGIONAL APPROACH TO THE LONG-TERM CONSERVATION, PROTECTION,  
REHABILITATION, ENHANCEMENT AND SUSTAINABLE USE OF THE BENGUELA CURRENT LARGE  
MARINE ECOSYSTEM TO PROVIDE ECONOMIC, ENVIRONMENTAL AND SOCIAL BENEFITS.

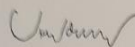
Adopted and signed on 21 August 2014



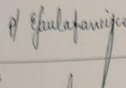
This Strategic Action Programme was adopted and signed by the Ministers of the respective countries:

### ON BEHALF OF THE REPUBLIC OF ANGOLA:

Hon. Dra. Victoria de Barros Neto  
Minister of Fisheries



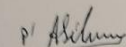

Hon. Dra. Maria de Fátima Jardim  
Minister of Environment



Hon. Dr. Augusto da Silva Tomás  
Minister of Transport



Hon. Eng. José Maria Botelho de Vasconcelos  
Minister of Petroleum



### ON BEHALF OF THE REPUBLIC OF NAMIBIA:

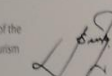
Hon. Dr. Samuel Chief Ankama  
Deputy Minister of Fisheries  
and Marine Resources



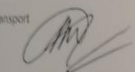

Hon. Mr. Willem Isaacs  
Deputy Minister of Mines and Energy



Mr. Simeon S. Ngunjiri  
Permanent Secretary on behalf of the  
Minister of Environment and Tourism



Hon. Mr. Xilas Nguvuna  
Deputy Minister of Works and Transport

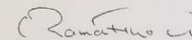



### ON BEHALF OF THE REPUBLIC OF SOUTH AFRICA:

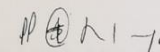
Hon. Ms. Edna Molewa  
Minister of Environmental Affairs



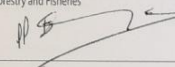

Hon. Adv. Ngoako Ramathodi  
Minister of Mineral Resources



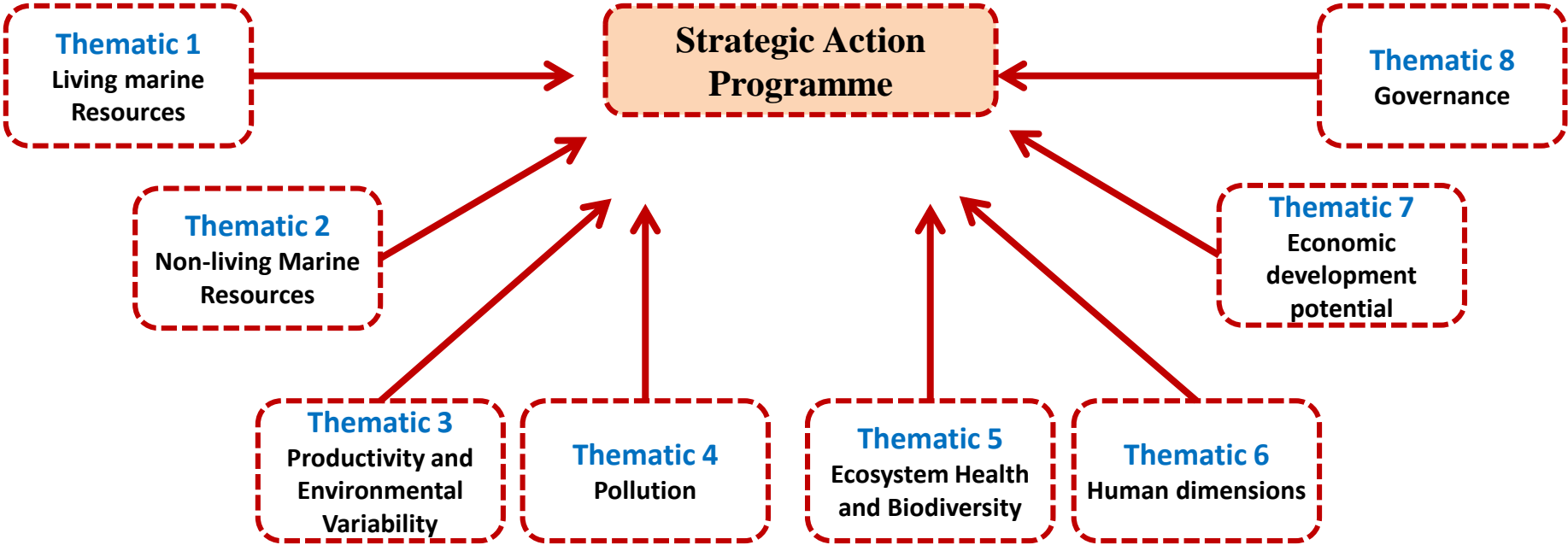
Hon. Ms. Dipuo Peters  
Minister of Transport



Hon. Mr. Senzeni Zokwana  
Minister of Agriculture, Forestry and Fisheries



- The TDA provided scientific & technical input into development of the SAP
- SAP II was adopted and signed (2014) Ministers
- SAP Implementation Plan,
- 8x Thematic Areas,
- Policy Actions and Specific activities



# SAP Implementation

*Three countries sharing a productive ecosystem*

Thematic Area	Policy Action	Activities
<b>1. Living Marine Resource</b>	Ensure compliance to management and conservation measures	<ul style="list-style-type: none"> <li>• Implement VMS for sharing of information between Parties and SADC,</li> <li>• Share MCS information, Intelligence, Resources, License and Registration lists, surveillance activities, port inspections, etc.,</li> <li>• Strengthen Regional and International cooperation</li> <li>• Implement a regional fisheries observer programme.</li> </ul>
<b>2. Non-Living Marine Resource</b>	Integrate and implement international standards for exploration and extraction	<ul style="list-style-type: none"> <li>• Investigate the ecosystem effects of mining activities,</li> <li>• Integrate into national and regional legislative frameworks international best-standards and practices for all extraction activities,</li> <li>• Improve the capacity for environmental management and enforcement, including monitoring,</li> <li>• Compile and maintain a database on positions of all underwater mining gear</li> </ul>



# SAP Implementation cont.

*Three countries sharing a productive ecosystem*

Thematic Area	Policy Action	Activities
<b>3. Productivity and Environmental Variability</b>	Improve the understanding of the BCLME ecosystem.	<ul style="list-style-type: none"> <li>Implement ocean-/global-scale monitoring system for early warning of extreme events,</li> <li>Monitor and understand the links and exchanges at boundaries e.g. Agulhas rings,</li> </ul>
	Prevent, abate, mitigate and prepare for oil spills.	<ul style="list-style-type: none"> <li>Develop and implement a regional (BCLME) oil contingency plan (oil-spill prevention and response strategy), including <b>an agreement</b> to mitigate against, prepare for and respond to oil spills,</li> <li>Harmonise international oil contingency plans with the main oil producing countries of the GCLME</li> <li>Implement the "polluter pays" principle regionally</li> <li>Strengthen regional monitoring and surveillance for oil spills including Port State Control</li> </ul>
<b>4. Pollution</b>	Reduce emissions of 'greenhouse' gases.	<ul style="list-style-type: none"> <li>Encourage implementation of United Nations (UN) Framework Convention on Climate Change (UNFCCC) by all marine sectors,</li> <li>Establish a baseline and encourage the implementation of best practice, encourage awareness and develop capacity to monitor and enforce compliance to Annex VI of 1973/78 MARPOL</li> </ul>

# SAP Implementation cont.

*Three countries sharing a productive ecosystem*

Thematic Area	Policy Action	Activities
<b>5. Ecosystem and Biodiversity Health</b>	Reduce threats to species and habitats	<ul style="list-style-type: none"> <li>• Implement the IMO ballast water guidelines,</li> <li>• Develop and implementation of National Plans of Action (NPOAs) for by-catch and ghost fishing for seabirds, turtles, etc.,</li> </ul>
<b>6. Human Dimension</b>	Implement regional cooperation for safety-at-sea.	<ul style="list-style-type: none"> <li>• Support the implementation of a regional rescue system for immediate reaction to emergencies such as ship collisions or aero plane crashes.,</li> <li>• Support and strengthen the implementation of regional protocols for safety-at-sea,</li> </ul>
<b>7. Governance</b>	Strengthen national human capacity to participate in BCC processes.	<ul style="list-style-type: none"> <li>• Expand and strengthen the BCC training programme to include: MCS, including observers, managers... to monitor <b>ecosystem health</b> and <b>pollution</b>; monitoring and enforcement of <b>industries</b> for compliance with environmental standards, etc.,</li> <li>• Develop a regional fishery observer programme to up-skill and enhance capacity in compliance monitoring and collection of scientific data;</li> </ul>

# SAP Implementation cont.

*Three countries sharing a productive ecosystem*

Thematic Area	Policy Action	Activities
<b>7. Governance</b>	Strengthen and harmonise policy and legislative frameworks.	<ul style="list-style-type: none"> <li>Assess relevant international and regional instruments and recommend to the Commission for these to be ratified or acceded to by all BCC Parties.</li> </ul>
	Strengthen the governance structures and procedures for the BCC.	<ul style="list-style-type: none"> <li>Develop or establish <b>new Committees</b> as set out in the Convention text, establish RoPs for functioning, including work plans and budgets, to be approved by the Commission.</li> <li>The <b>Compliance Committee</b>, as a new Committee, will require particular strengthening.</li> </ul>
	Strengthen regional and international cooperation.	<ul style="list-style-type: none"> <li>Support the strengthening of inter-sectorial working groups, established by the Committees,</li> <li>Establish and strengthen partnerships with organisations to improve cooperation to resolve present and future challenges facing the BCLME</li> <li>Strengthen the long standing relationship with SADC</li> <li>Strengthen the cooperation with the caucus of African LME and Regional Bodies through a communication plan to assist in sharing information and data</li> </ul>

# SAP Implementation Budget

*Three countries sharing a productive ecosystem*

Project	Thematic areas	Donor	Amount (million)	Period
MARISMA	<ul style="list-style-type: none"> <li>Blue Economy</li> <li>Human dimension (HD)</li> </ul>	Germany	8.9 euro	2015-2020
ECOFISH	<ul style="list-style-type: none"> <li>Living Marine Resources (LMR)</li> </ul>	EU	1.5 euro	2010-2016
Climate Change	<ul style="list-style-type: none"> <li>LMR, HD</li> <li>Governance</li> </ul>	GEF-FAO	4.7 USD	2016-2021
BCLME III	<ul style="list-style-type: none"> <li>Governance</li> <li>Blue Economy</li> <li>Pollution</li> </ul>	GEF-UNDP	10.9 USD	2016-2021
Ecosystem-Based management	<ul style="list-style-type: none"> <li>LMR, Pollution</li> <li>Ecosystem Health and Biodiversity</li> </ul>	Norway	3.7 NOK	2016-2017
Secretariat	<ul style="list-style-type: none"> <li>Support to BCC Sec.</li> </ul>	Parties	0.6 USD	Annually

# Ecosystem-based Management

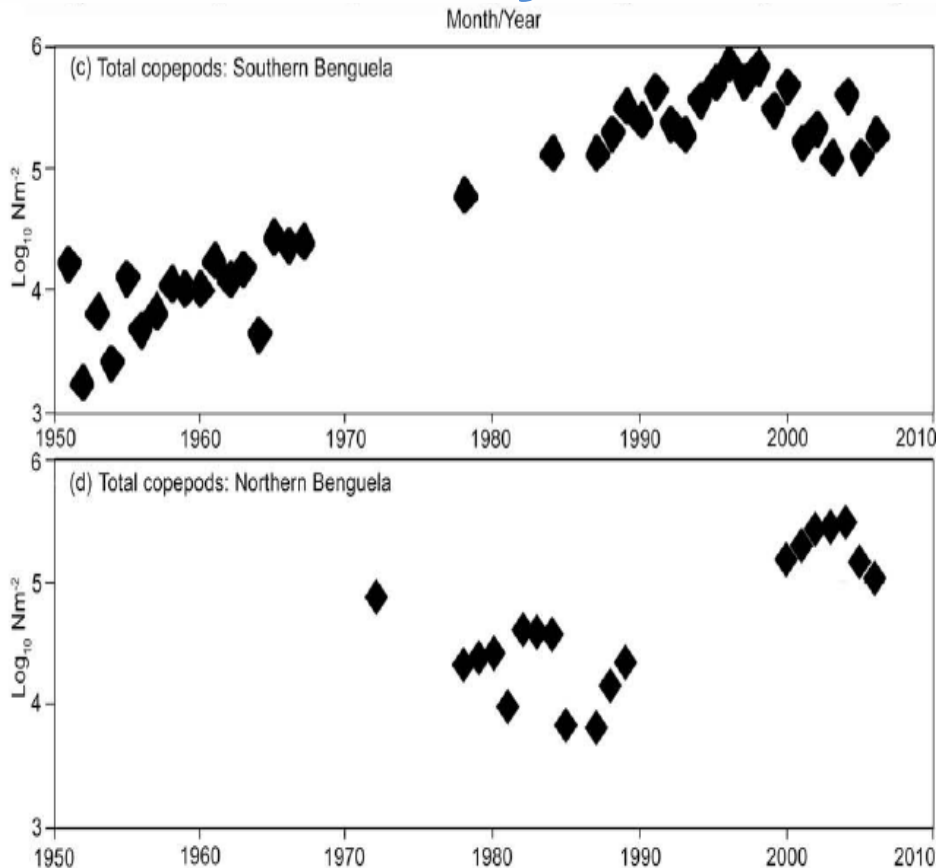
SECTOR MANAGEMENT	MULTI-SECTORIAL MANAGEMENT
Small spatial scale	Multiple scales
Short-term perspective	Long-term perspective
Humans independent of ecosystems	Humans as integral parts of ecosystems
Management divorced from research	Adaptive management
Managing commodities	Sustained production potential for ecosystem goods and services



# Marine Environmental Monitoring

*Three countries sharing a productive ecosystem*

## Productivity



- **Continuous Plankton Recorder (CPR) Programme**
- Real-time environ monitoring stations
- **Assessment of long-term environmental variability and trends as a basis for climate change studies.**



# Management of Marine Pollution

*Three countries sharing a productive ecosystem*



- ✓ Early warning systems and disaster risk management
- ✓ Regional oil spills contingency and response planning



## Training and Capacity Development

- BCC Training and Capacity Building (TCB) Strategy and Policy
- Ongoing improvement of technical and scientific skills and capacity – e.g. fish stock assessment and Responsible Fisheries training;
- Awareness and capacity building on ocean governance, transboundary management and ecosystem approach to fisheries (EAF) management



# Closing remarks

*Three countries sharing a productive ecosystem*

## Challenges

- Financial sustainability is the greatest challenge facing the BCC;
- Partners have provided 1/3 of funds required to implement the SAP, a substantial shortfall of about 43 million;
- The Commission continues to search for solutions to resolve this financial difficulty,
- Nomination of officials to serve in BCC structures.

## Strengths of the BCC

- Politically, the countries are collaborating, reached goodwill, mutual trust and ownership;
- Fully functional corporate structure (Ministerial Conference, Commission, Committees, Secretariat);
- Good corporate governance, ability to attract and manage financial resources;
- Sharing best practices and resources;
- Processes (policies, procedures, business plans, work plans) in place;
- BCC a formidable brand, the first Convention in the world based on the concept of large marine ecosystem;
- Rich scientific base that inform management; etc.

Thank You / Obrigado!!

Xolela Wellem

[Xolela@benguelacc.org](mailto:Xolela@benguelacc.org)

+264 81 145 7066

+264 64 406 901