

POEM already approved by the Minister's Council (2021)
Waiting for publication on the Government Gazette

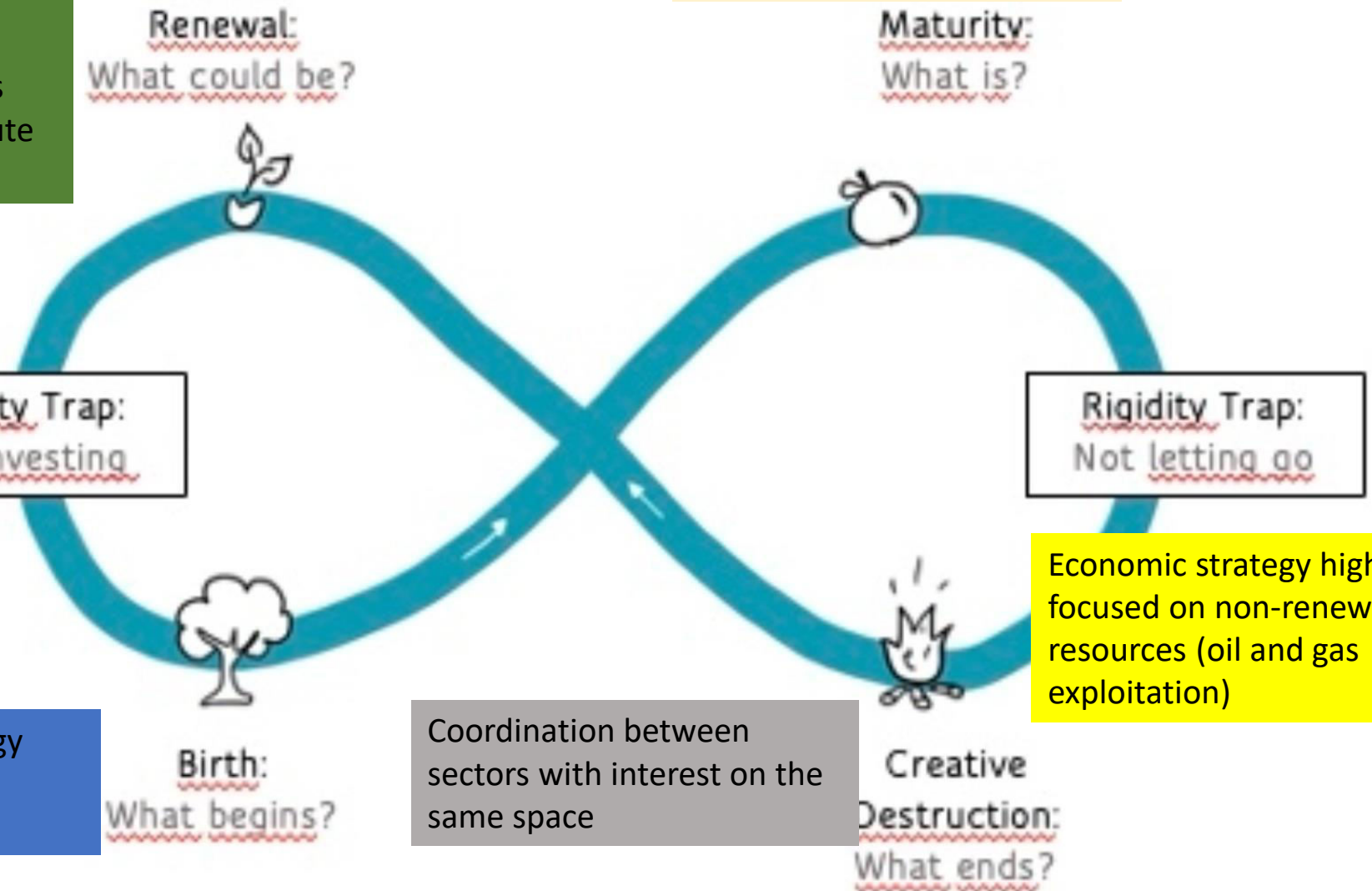
Promote a sustainable exploitation of coastal natural marine and inland waters for the present and future generations. Coastal and marine, including inland waters resources and associated activities contribute significantly to sustainable development

Lack of buy in of the different stakeholders
Conflict of interest
overlapping of already planned initiatives

Mangrove restoration strategy
Key Biodiversity Areas
which includes CFMA-R

Coordination between sectors with interest on the same space

Economic strategy highly focused on non-renewable resources (oil and gas exploitation)





REPUBLIC OF MOZAMBIQUE
MINISTRY OF SEA, INLAND WATERS AND FISHERIES



MARITIME SPACE PLANNING PLAN (POEM)

Mombasa, November 2023

POLMAR

(Resolution no. 34/2017, of 14 September)

PILLAR A - Governance and
Legal Framework

PILLAR E – Territorial
Development

**Legal
Framework**

Adopts **Maritime
Planning, Planning and
Zoning** as the
guarantor of the
proper use of the Sea

Guides for the
inclusion of **Maritime
Planning** in the
National Plan for
Territorial
Development



Legal Framework

RJUEM

(Decree No. 21/2017, of 24 May)

Establishes the mandatory National Maritime Spatial Planning (POEM) to respond to the demand for maritime space for different purposes, through 2 instruments:

SITUATION PLAN (PS)
Spatial and temporal distribution of existing and potential uses and activities

ALLOCATION PLANS (PAN)
Assignment of areas or volumes of maritime space to uses or activities, which are not identified in the PS, which become part of it



MSP status and readiness in Mozambique



Plan approved by the Council of Ministers in November 2021

The Publication Process in the Government Gazette currently underway

Current status - What coastal and marine data and information is available and in what format?

POEM is focused on a broad set of **coastal and marine information** and layers of information, corresponding to the thematic areas analyzed within the scope of Inventory and Characterization studies and this information is represented in cartographic form and can be viewed through WebGIS .

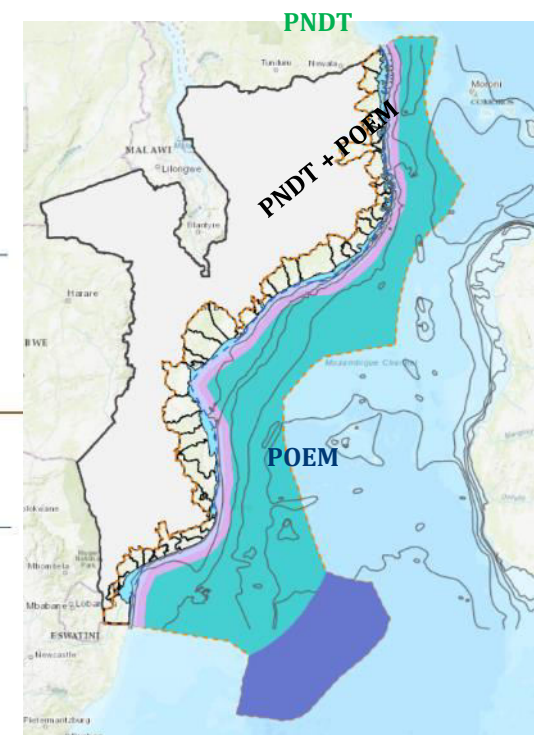
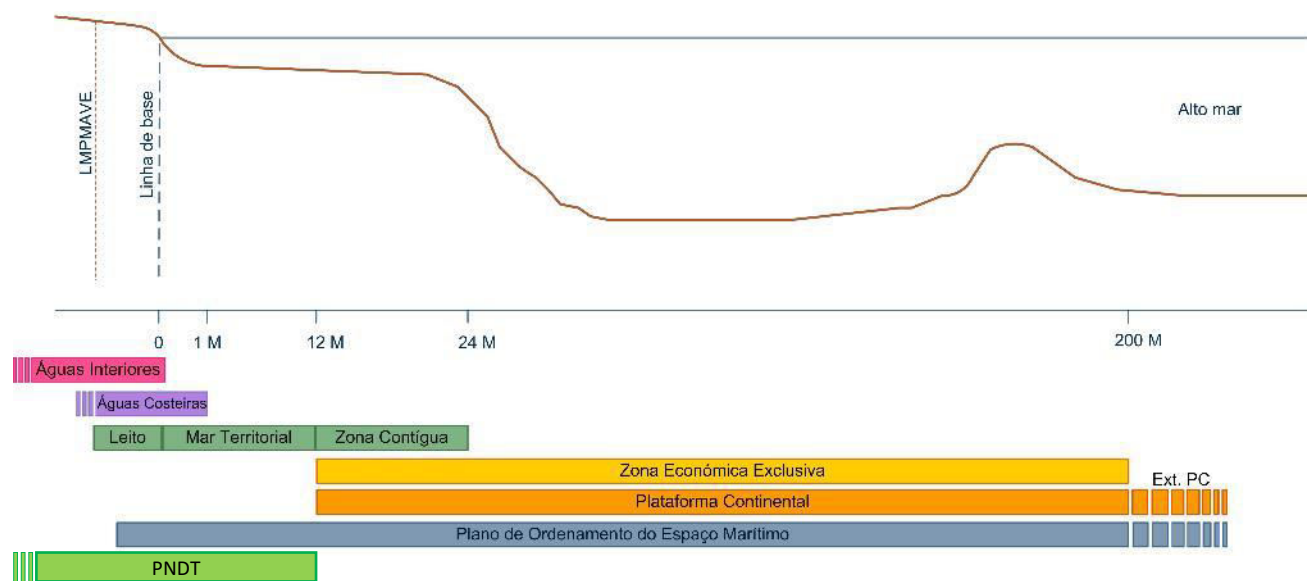
1. Mozambique Maritime Space
2. Natural Conditions of the Maritime Space of Mozambique
3. Coastal Strip
4. Bathymetry
5. Evolution of the Coastline
6. Climate changes
7. Environmental Quality
8. Occupation of the Coastal Strip / Coastal Communities
9. Sovereignty, Defense and Security
10. Priority Conservation Zones
11. Conservation Areas
12. Ecosystems and Biodiversity

13. Fisheries
14. Aquaculture
15. Port Infrastructures and Navigation
16. Telecommunications Infrastructures
17. Coastal Structures
18. Tourism and Recreation
19. Cultural, Architectural and Archaeological Heritage
20. Mineral resources
21. Energy Resources (oil and gas)
22. Renewable Energy Resources and Energy Production
23. District Land Use Plans (PDUT)
24. PNDT Territorial Model

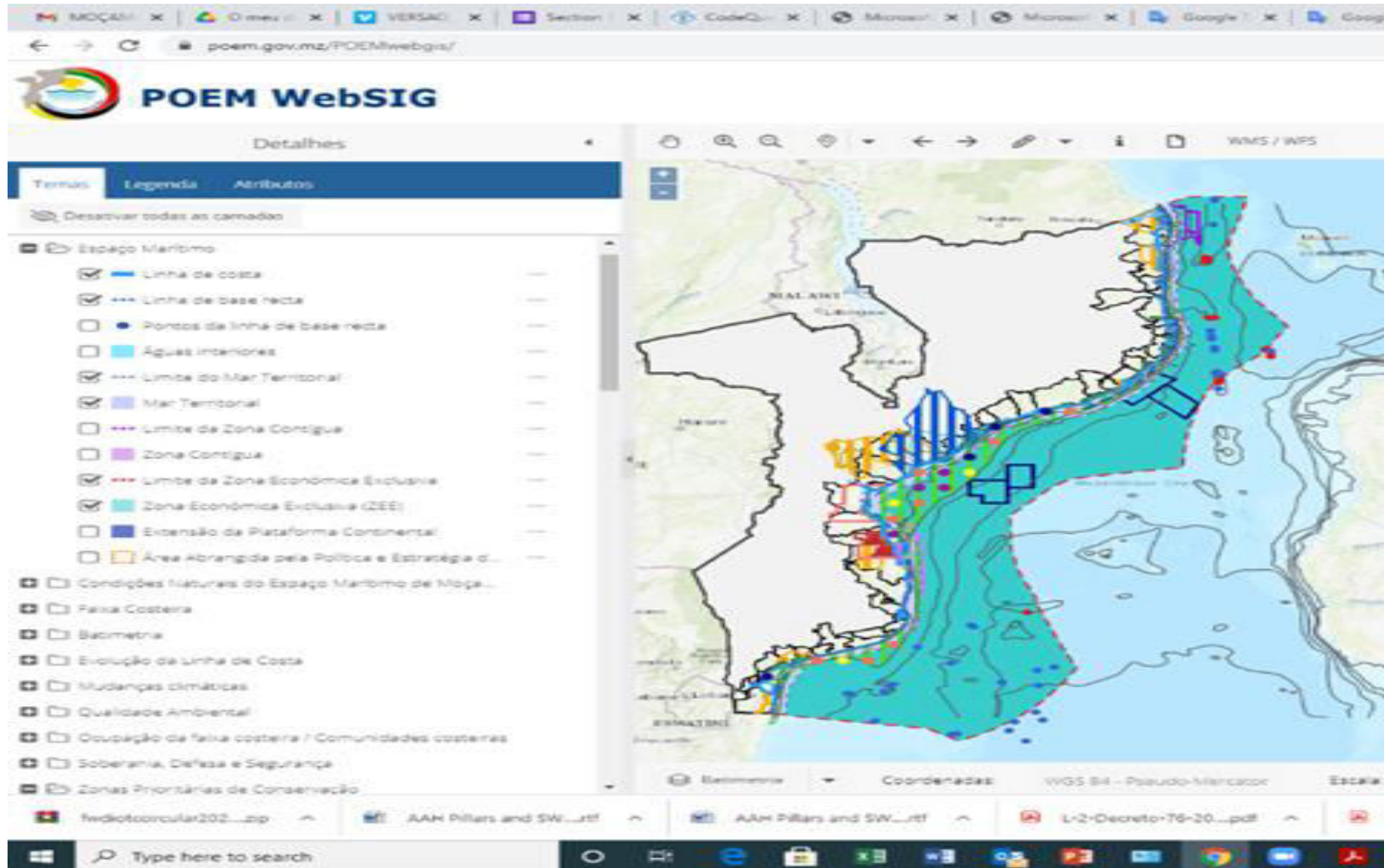
Área de incidência do POEM

POEM encompasses activities, uses and functions that occur within the following limits:

- maritime inland waters territorial
- Sea contiguous Zone
- Exclusive Economic Zone
- Continental shelf and its extension
- coastal areas up to the limit of coastal districts (in conjunction with the PNDT)
- On the high seas, on activities carried out by national people



Web-GIS tool created: Accessible at - www.poem.gov.mz <https://poem.gov.mz/POEMwebgis/>



Institutions participating in the MSP

CONSULTATIVE COMMITTEE – CONSTITUTED IN ACCORDANCE WITH ART. 15 FROM RJUEM

Ministries that are part of the Consultative Committee

1. Ministry of Sea, Inland Waters and Fisheries
2. Ministry of National Defense
3. Ministry of Economy and Finance
4. Ministry of Transport and Communications
5. Ministry of Mineral Resources and Energy
6. Ministry of Higher Education, Science and Technology
7. Ministry of Public Works, Housing and Water Resources
8. Ministry of Land and Environment
9. interior Ministry
10. Ministry of State Administration and Public Service
11. Ministry of Culture and Tourism

FUNCTION: monitor, support, supervise and evaluate the process of preparing the **POEM** , and promote a adequate concertation of the different interests involved.

KEY ACTORS / STAKEHOLDERS AND INVOLVED IN POEM

- Government Entities - Central Level
- Provincial Level
- Coastal Municipalities and Districts
- Academic Organizations
- Nature Conservation, Environment and Planning Organizations
- Fishing Associations
- Fishing Companies
- Fish Processing, Commercialization and Export Companies
- International Organizations in Mozambique
- Foreign Representations in Mozambique

Government Arrangements for Interventions

- The Consultative Committee to prepare the Maritime Space Planning Plan (POEM) was created, in accordance with the provisions of article 15 of the Regulation Establishing the Legal Regime for the Use of Maritime Space;
- The Consultative Commission is coordinated by the Ministry of the Sea, Inland Waters and Fisheries;
- Each of the members of the Consultative Committee served as a liaison for coordination with the Sectors of activity ; providing all the information necessary for the process.

Data collection and management

- The member of the Consultative Committee for each Sector was responsible for collecting information (legislation, reports, systematized data, shapfile , etc.) in their institution, which was then made available to coordinate the preparation of the POEM;
- This information constituted the database of the Maritime Spatial Planning Plan (Situation Plan);
- Based on the information collected, the POEM web page – GIS was created.

Case study on MSP in Mozambique

- In Mozambique, the MSP is national in scope and encompasses the entire Maritime Space;
- The process is currently underway to develop a specific MSP at the level of Maputo Bay, with more details and details;

Proposed planning process, activities carried out and next step

- Prepare specific Marine Spatial Plans (in detail), in identified critical areas.

Thanks
Any questions or comments