

Somalia Marine Spatial Planning Initiative

WIOSymphony training

MSP Expert team:

- Abdulqadir Ziyad
- Potlako Khati
- Elke Talma
- Jemima Doudee

GIS expert (support staff):

- Edmond Sacre

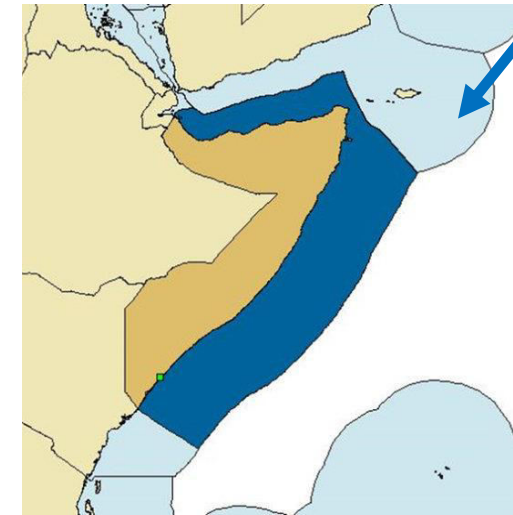


Somalia Marine Spatial Planning Initiative

- **Area:** Somalia eco-region from Gulf of Aden to Southern border

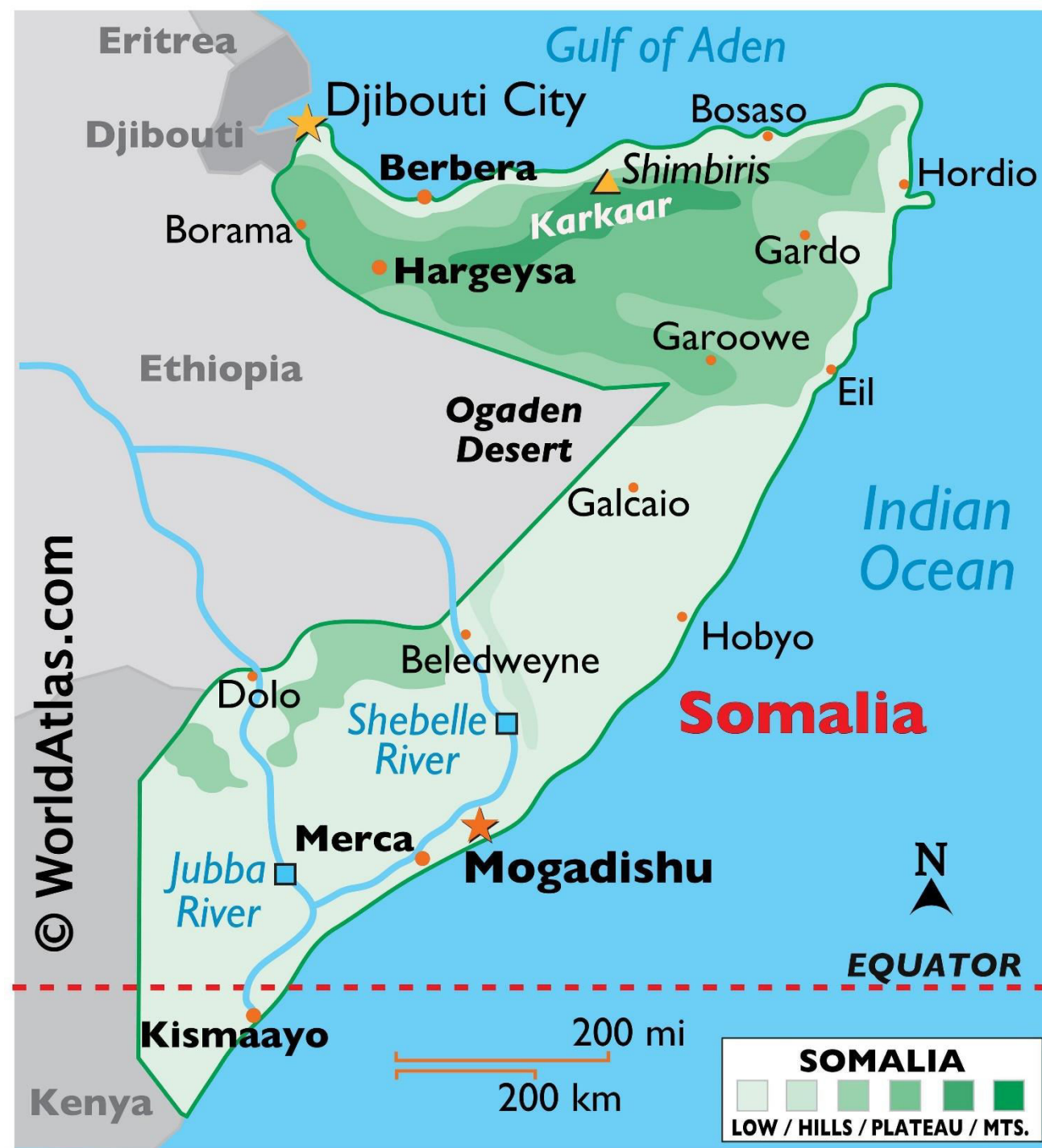


Exclusive economic Zone



Terrestrial I territory

Somalia Marine Ecosystem Mapping



Somalia Marine Spatial Planning Initiative

- **Ecosystems:** tropical habitats, coral reef, seagrass, mangroves, salt marshes, shallow hard bottom, shallow soft bottom, continental shelf (40 to 200m), fish, birds, invertebrates, dugongs, dolphins, turtles)

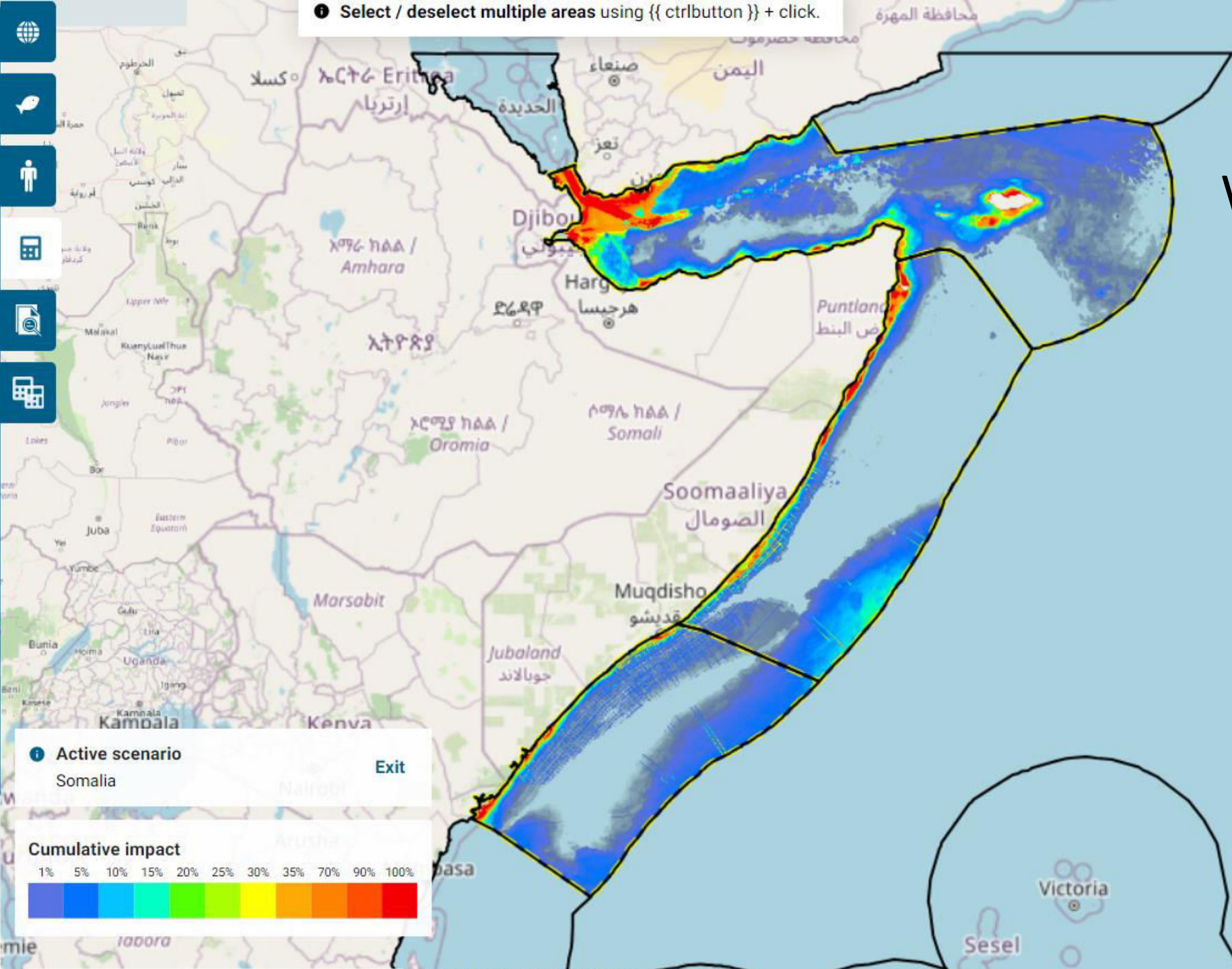


Somalia Marine Spatial Planning Initiative

- **Pressures:** IUU (other fishing), commercial fishing, artisanal fishing, eutrophication, submarine cables, plastics, shipping (CC not included to keep things simple)



Select / deselect multiple areas using {{ ctrlbutton }} + click.

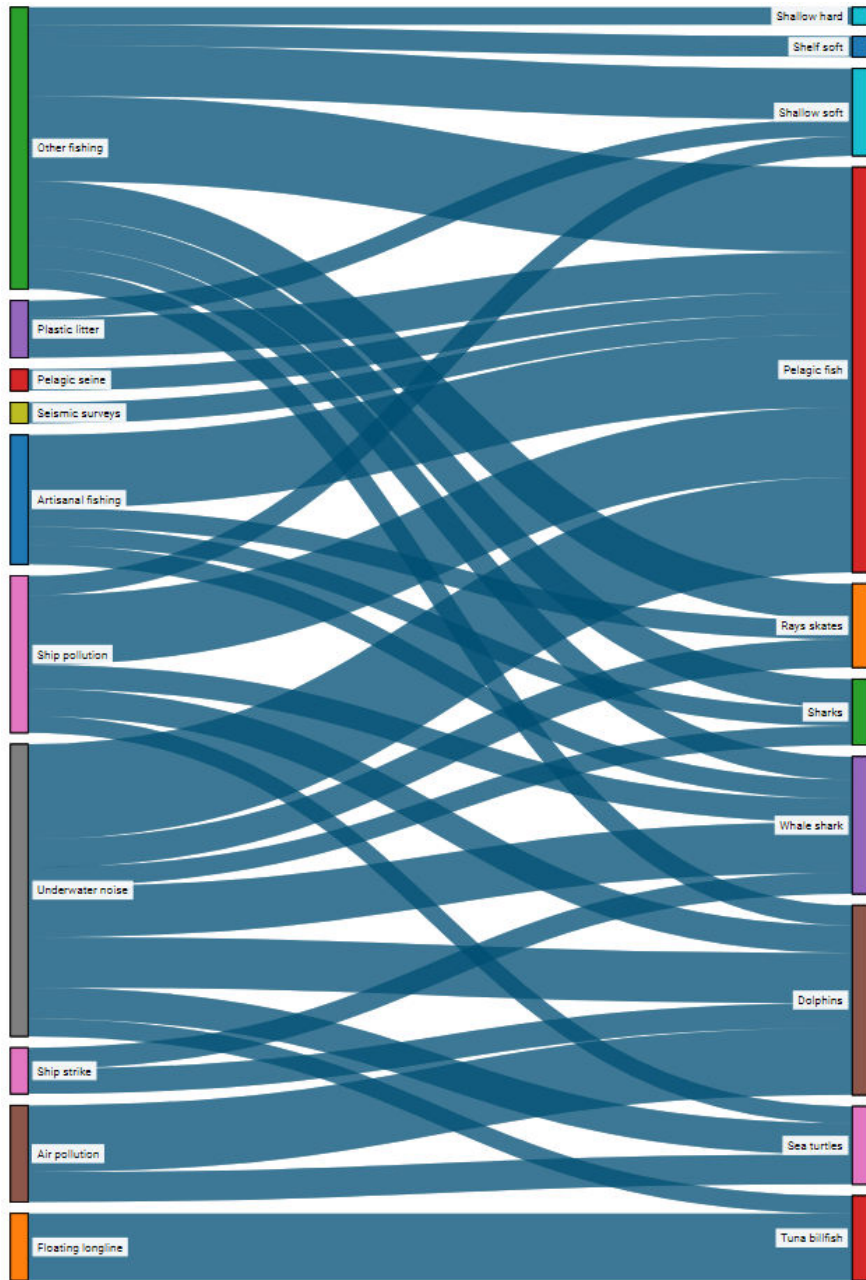


WIOSymphony
tool output
(MAP - baseline)

Active scenario
Somalia
Exit



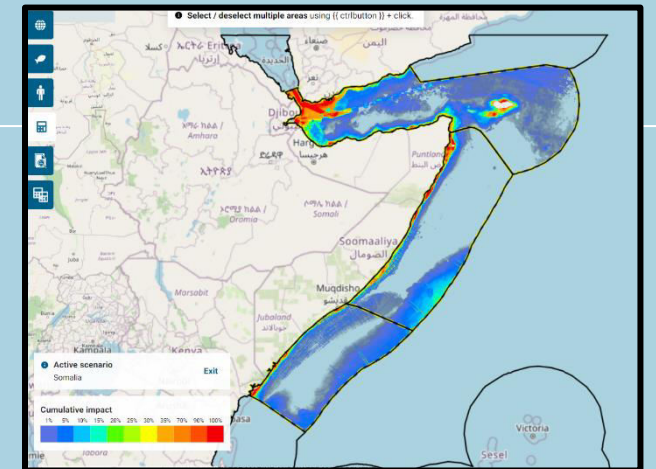
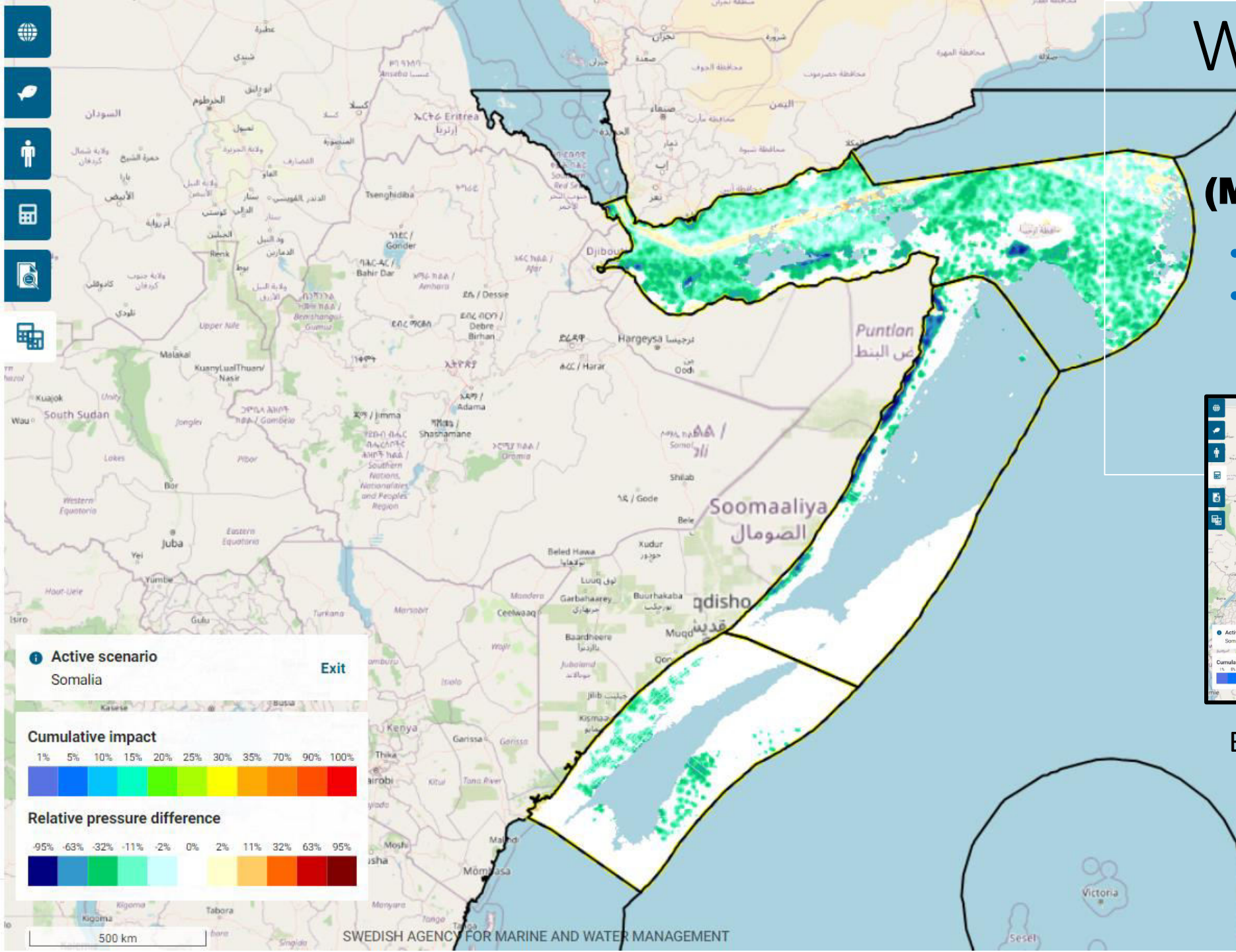
WIOSymphony tool output (SANKEY DIAGRAM – baseline)





WIOSymphony tool output (MAP - future scenario)

- 0% IUU
- +20% shipping

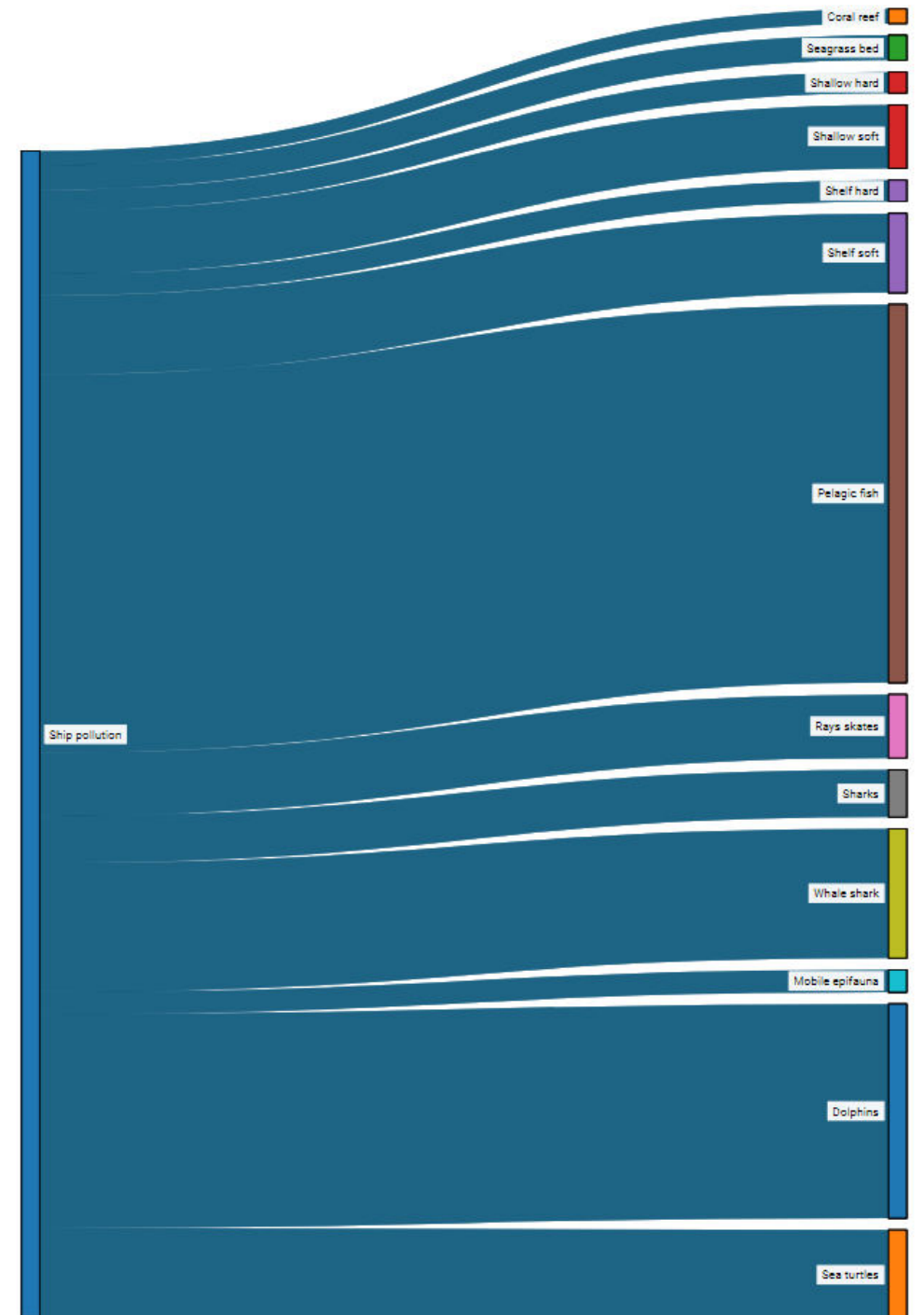


Baseline map

WIOSymphony tool output:

Increased shipping (+20%) is expected to negatively impact:

- Pelagic fishery
- Sea turtles
- Whale sharks
- Marine mammals
- Coral reefs
- Seagrass meadows



WIOSymphony tool output:

Decreased IUU / other fishing (-100%)
is expected to positively impact:

- Shallow bottom
- Pelagic fishes
- Rays & skates
- Marine mammals
- Sea turtles
- Seagrass meadows

